

## ITEM DESCRIPTION

The Sequence Builder is an easy-to-use and streamlined program that drastically simplifies the sequence building process. Define sequence parameters (sample location, injection volume, methods, column sets) only once and build a detailed sequence table which can be imported directly into ChemStation.

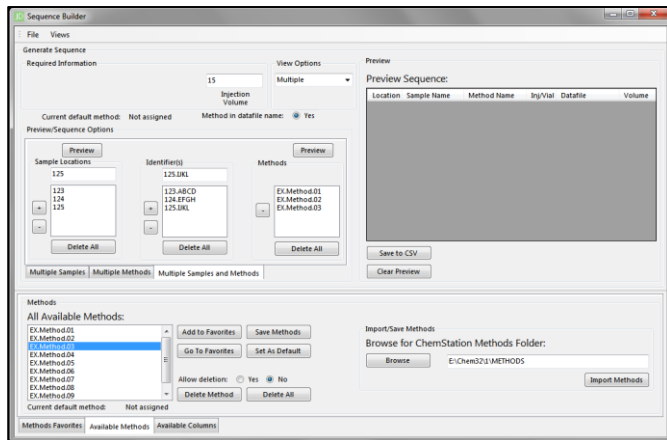
## KEY FEATURES

- Adaptive User Interface
- Define Sequence Parameters Once
- Save Methods, Method Favorites, Column Sets
- Import Entire Methods Directory (Every Defined Method) From ChemStation

## ADAPTIVE USER INTERFACE

The Sequence Builder has several modes of operation: Simple, Simple + Add Single, and Multiple. These modes are specialized for sequence table creation depending on the different combinations of how many samples you wish to screen, how many columns you have, and how many methods you plan to use.

Sequence Builder Multiple Samples & Methods Interface



Constructed Sequence Table

	A	B	C	D	E	F
	Location	Sample Name	Method Name	Inj/Vial	Datafile	Volume
1						
2	123	123.ABCD	EX.Method.01.M	1	123.ABCD-EX.Method.01-Column.01-01	15
3	123	123.ABCD	EX.Method.01.M	1	123.ABCD-EX.Method.01-Column.02-01	15
4	123	123.ABCD	EX.Method.01.M	1	123.ABCD-EX.Method.01-Column.03-01	15
5	123	123.ABCD	EX.Method.01.M	1	123.ABCD-EX.Method.01-Column.04-01	15
6	123	123.ABCD	EX.Method.01.M	1	123.ABCD-EX.Method.01-Column.05-01	15
7	124	124.EFGH	EX.Method.01.M	1	124.EFGH-EX.Method.01-Column.01-01	15
8	124	124.EFGH	EX.Method.01.M	1	124.EFGH-EX.Method.01-Column.02-01	15
9	124	124.EFGH	EX.Method.01.M	1	124.EFGH-EX.Method.01-Column.03-01	15
10	124	124.EFGH	EX.Method.01.M	1	124.EFGH-EX.Method.01-Column.04-01	15
11	124	124.EFGH	EX.Method.01.M	1	124.EFGH-EX.Method.01-Column.05-01	15
12	125	125.IJKL	EX.Method.01.M	1	125.IJKL-EX.Method.01-Column.01-01	15
13	125	125.IJKL	EX.Method.01.M	1	125.IJKL-EX.Method.01-Column.02-01	15
14	125	125.IJKL	EX.Method.01.M	1	125.IJKL-EX.Method.01-Column.03-01	15
15	125	125.IJKL	EX.Method.01.M	1	125.IJKL-EX.Method.01-Column.04-01	15
16	125	125.IJKL	EX.Method.01.M	1	125.IJKL-EX.Method.01-Column.05-01	15
17	123	123.ABCD	EX.Method.02.M	1	123.ABCD-EX.Method.02-Column.01-01	15
18	123	123.ABCD	EX.Method.02.M	1	123.ABCD-EX.Method.02-Column.02-01	15
19	123	123.ABCD	EX.Method.02.M	1	123.ABCD-EX.Method.02-Column.03-01	15
20	123	123.ABCD	EX.Method.02.M	1	123.ABCD-EX.Method.02-Column.04-01	15

